

Rentals/Temporary and Permanent Installation Tips:

By using a 1 1/2" spigot trap adapter and no-hub coupling, the ET117-008 may be removed and the standpipe left in its original condition. You can unscrew the ET117-008 to check flow rates, or install at a new location even if a trap adapter or wye and trap adapter combination is permanently glued to the stand pipe.

The two trap adapters provided with your ET117-008 will allow you to make a connection to any standpipe configuration encountered: use the close 1 1/2" MIPT nipple in a threaded female fitting, the spigot adapter in a female slip fitting, and a hub adapter over PVC pipe. The Beveled washer and O-ring are interchangeable, but should not be used together.

No-Hub connectors:

Ideal for cast iron or non-threaded galvanized steel, copper, and ABS/PVC Pipe. With the use of non-hub Couplings, it is a simple procedure to splice into any drain line to fabricate a standpipe.

Note:

In most residential applications, it is permissible to transition from metal to plastic using no-hub couplings, however some commercial buildings require a uniformity of materials throughout the drainage system such as all no-hub cast iron pipe. For this reason, it is advisable to determine the specific code requirements for each job.

List of materials useful to have on hand:

(These materials are inexpensive, easy to find, and take up very little space.)

2" No-Hub Coupling	2" ABS/PVC Combination Tee
2" x 1 1/2" No-Hub Coupling	2" x 1 1/2" ABS/PVC Combination Tee
1 1/2" No-Hub Coupling	1 1/2" ABS/PVC Combination Tee
2" ABS/PVC Wye (Hub or Street)	2" ABS/PVC Sanitary Tee
2" x 1 1/2" ABS/PVC Wye (Hub or Street)	2" x 1 1/2" ABS/PVC Sanitary Tee
1 1/2" ABS/PVC Wye (Hub or Street)	1 1/2" ABS/PVC Sanitary Tee
2" ABS/PVC P-Trap	2" ABS/PVC Sch-40 Pipe (5'-10')
1 1/2" ABS/PVC P-Trap	1 1/2" ABS/PVC Sch-40 Pipe (5'-10')
2" x 1 1/2" ABS/PVC Reducer Coupling	ABS Glue
2" x 1 1/2" ABS/PVC Flush Brushing	PVC Primer & Glue
1 1/2" ABS/PVC Street 45 (1/8 Bend)	1" Teflon Tape or Pipe Joint Compound

Tools useful to have on hand:

- Sawzall Pipe/Tube Cutter or Hacksaw
- Channel Lock or Pipe Wrench
- No-Hub Wrench or Straight Screw Driver
- Tape Measure

MADE IN USA
ASME A112.1.3



Serving the
Water Treatment
& Plumbing Industry

AIR GAP

Copyright 2017 AIR GAP INTERNATIONAL

AIR GAP

Brea, California

**Model: ET117-008TM
(DLA-G)**

Pat. No. 5,449,456

Pat. No. 5,681,459

Pat. No. 5,944,985

Pat. No. 6,193,879

MADE IN USA

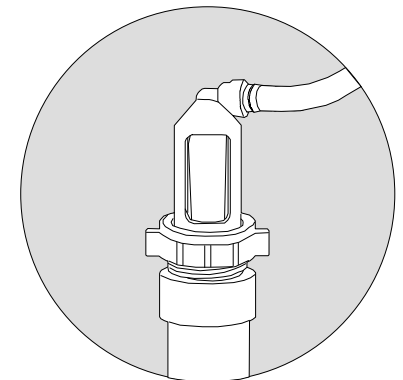
Multipurpose Airgap **DRAIN LINE ADAPTER**

► For Schedule – 40
Standpipe Installation



ASME A112.1.3

Part No.
ET117-008
(G-50BP)



ET117-008

Installation Procedures

For Stand Pipe Applications

LIST OF PARTS ENCLOSED

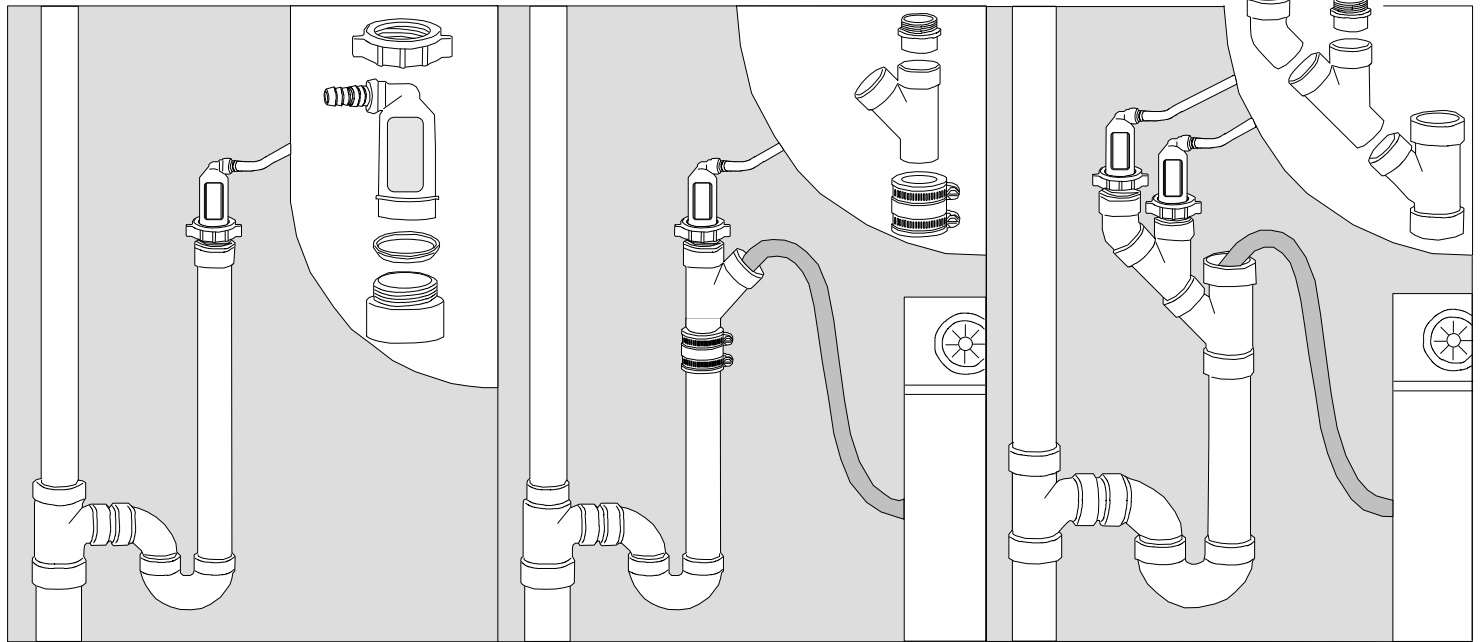
- 1 – Drain Line Adapter Airgap with 1/2" Barb Insert Connection
- 1 – 1 1/2" Schedule – 40 (Hub x Male Pipe Thread) PVC Trap Adapter
- 1 – 1 1/2" Schedule – 40 (Spigot x Male Pipe Thread) PVC Trap Adapter
- 1 – 1 1/2" Slip Joint (S.J.) Wing Nut
- 1 – 1 1/2" Slip Joint (S.J.) Beveled Washer
- 1 – 1 1/2" Nitrile O-Ring (for alternate use instead of washer)

- **The ET117-008 provides a true airgap for all Schedule-40 DWV standpipes.**
- **These instructions are intended for the professional installer. Examples are given without providing details of every procedure.**

To comply with all plumbing code requirements, the standpipe used with a ET117 Series must be trapped, vented and fabricated from a Schedule-40 Drain Waste and Vent material that has been approved in your area, such as:

ABS, PVC, galvanized steel, copper or no-hub cast iron with an inside diameter of 1 1/2" or greater.

Below are the three practical standpipe configurations:



The examples below:

Combination residential water softener / RO / washing machine drain configurations

